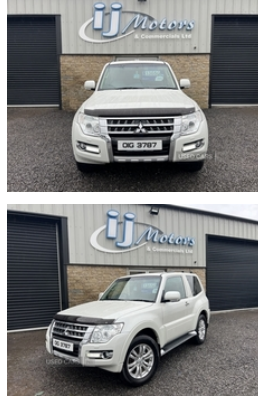


Mitsubishi Shogun 3.2 DI-DC [197] SG2 3dr | Feb 2015

IMMACULATE, 1 YEARS WARRANTY

POA



ALL OUR VEHICLES CAN BE CUSTOMISED TO YOUR SPEC IF REQUIRED

FINANCE AVAILABLE WITH ZERO DEPOSIT IF REQUIRED NORTH AND SOUTH

*** ONLY VRT TO BE PAID ON THIS JEEP TO THE SOUTH ***

- 15 MITSUBISHI SHOGUN 3.2 DI-DC [197] SG2 3dr

- STUNNING PEARL WHITE

- 5 SPEED MANUAL GEARBOX

- 80,000 CORRECT MILES

- FULL MITSUBISHI SERVICE HISTORY

- 1 COMPANY OWNER

- REG NO OIG 3787 (FEB '15)

- HEATED CLOTH INTERIOR

- FULLY SERVICED

- LED DAYTIME RUNNING LIGHTS

- PROFESSIONALLY VALETED & POLISHED

- FINANCE AVAILABLE KEEN RATES

OTHER CARS IN STOCK

OPEN 6 DAYS A WEEK

TOP RATE ON EURO

| | |
|-------------------------|-----------------------|
| Miles: | 80000 |
| Fuel Type: | Diesel |
| Transmission: | Manual |
| Colour: | White |
| Engine Size: | 3200 |
| CO2 Emission: | 207 |
| Tax Band: | K (£430 p/a) |
| Body Style: | Sport utility vehicle |
| Insurance group: | 32A |
| Reg: | OIG3787 |

Technical Specs

DIMENSIONS

| | |
|-----------------------------|--------|
| Length: | 4385mm |
| Width: | 1875mm |
| Height: | 1870mm |
| Seats: | 5 |
| Gross Weight: | 2665KG |
| Max. Loading Weight: | 570KG |

PERFORMANCE & ECONOMY

| | |
|------------------------------------|----------|
| Fuel Consum. (Urban Cold): | 29.7MPG |
| Fuel Consum. (Extra Urban): | 40.9MPG |
| Fuel Consum. (Combined): | 36.2MPG |
| Fuel Tank Capacity: | 69L |
| Number Of Gears: | 5 SPEED |
| Top Speed: | 111MPH |
| Acceleration 0-100 km/h: | 9.7s |
| Engine Power BHP: | 197.1BHP |

TEL IAN 07773742609 (00447773742609 ROI)
ANDREW 07706826021 (00447706826021 ROI)

CALL ANY TIME
ALL CREDIT AND DEBIT CARDS ACCEPTED

SERIOUS VALUE FOR MONEY
MORE JEEPS IN STOCK

FIND US ON FACEBOOK OR

Vehicle Features

2nd row centre armrest with built-in cupholders, 3 point ELR/ALR belts x3 on 2nd row, 4 spoke leather steering wheel, 6 speakers, 18" alloy wheels, 60/40 split/folding tip-up 2nd row seats, ABS+Electronic Brake force Distribution, Aerial in nearside rear quarter window, Anti-odour air filter, Cabin air filter, Cargo room underfloor compartment, Central door locking and tailgate, Centre console accessory socket, Centre multi info display, Chrome front grille, Climate control, Cloth upholstery, Coathangers (2), Collapsible steering column, Colour keyed bumpers, Colour keyed door handles, Colour keyed door mirrors, Cruise control, Curtain airbags, Diesel particulate filter, Door ajar warning lamp, Driver/passenger sunvisors and vanity mirrors, Dual SRS airbags, Electric adjustable/heated/folding door mirrors, Electric windows with drivers 'one touch' open, Engine immobiliser, Floor console box with slide-adjust centre armrest, Front accessory power socket, Front and rear towing rings, Front cupholders, Front door courtesy lamps, Front door pockets, Front interior light, Front map reading lights, Front passenger airbag deactivation, Front seatback pockets, Front seatbelt pretensioner, Front side airbags, Front skid plate, Full size alloy spare wheel, Headlamp levelling, Heated front seats, Height adjustable 1st and 2nd row headrests, Illuminated ignition with time delay, Instrument panel light dimmer, Intermittent rear wash/wipe, Isofix rear child seat preparation in 2nd row, Key left in ignition audible warning, Keyless entry and alarm, Leather gear knob and handbrake grip, Lights on warning, Lockable/illuminated glovebox, Locking wheel nuts, Luggage area lamp, Luggage cover, Luggage tie-down hooks, PAS, Reach adjustable steering wheel, Rear accessory power socket, Rear quarter windows 'butterfly' type, Rear window demister with timer, Reclining rear seats, Remote fuel flap release, Retractable assist grips (4), Seatbelt warning lamp, Silver roof rails, Silver side steps, STC - Stability and traction control, Steering wheel mounted audio controls, Stereo radio/CD player and MP3 facility, Stowage pocket in tailgate trim, Sunglasses holder, Tailgate mounted spare wheel, Tilt adjustable steering wheel, Variable intermittent front wash/wipe